



1.4.1 Student feedback on curriculum/syllabus

Academic Year 22-23

Index		
SI No	Department	Page Number
1	CSE	3
2	ECE	4
3	EEE	5
4	EIE	6
5	CE	7
6	ME	8
7	MCA	9
8	MBA	10



Questionnaire	
Q1	The objectives of all the courses are clearly defined
Q2	The syllabus is appropriate for achieving the program's learning outcomes and competencies
Q3	The syllabus is updated to reflect new advances in the field
Q4	The library is stocked with required learning resources, such as suggested textbooks and reference books
Q5	The electives are related to core subject and suitable for specializing in a specific field
Q6	The laboratory activities help in the comprehension of concepts
Q7	The programme encourage self-learning and higher study
Q8	The curriculum is structured to assist students understand and provide solutions to the real-world issues
Q9	The programme is effective in instilling confidence in you to face competitive exams and interviews
Q10	The curriculum introduces students to environmental and sustainability issues, professional ethics, etc.

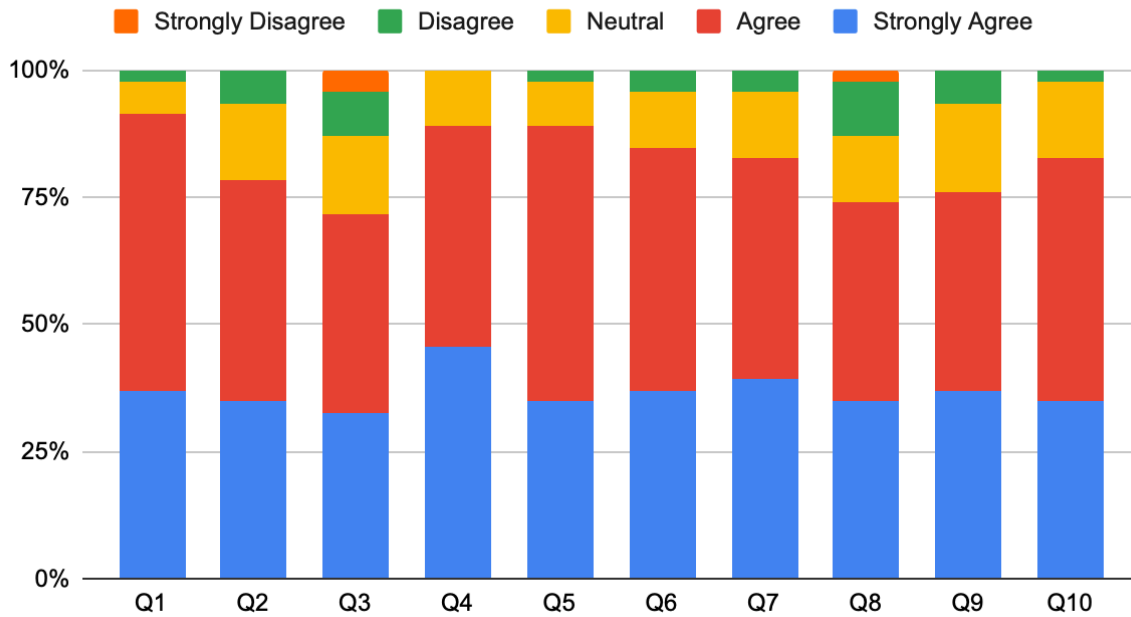
Options

Strongly Agree	Agree	Neutral	Disagree	Strongly Disagree
----------------	-------	---------	----------	-------------------



	YOP	2023	Branch	CSE						
	Q1	Q2	Q3	Q4	Q5	Q6	Q7	Q8	Q9	Q10
Strongly Agree	17	16	15	21	16	17	18	16	17	16
Agree	25	20	18	20	25	22	20	18	18	22
Neutral	3	7	7	5	4	5	6	6	8	7
Disagree	1	3	4	0	1	2	2	5	3	1
Strongly Disagree	0	0	2	0	0	0	0	1	0	0

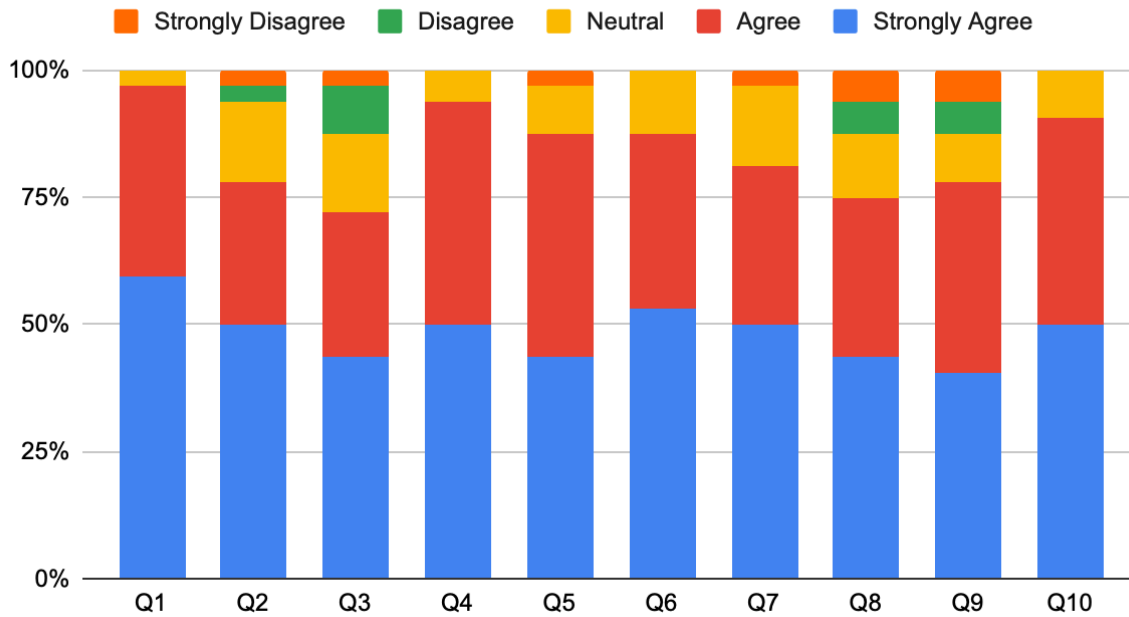
CSE





	YOP	2023	Branch	ECE						
	Q1	Q2	Q3	Q4	Q5	Q6	Q7	Q8	Q9	Q10
Strongly Agree	19	16	14	16	14	17	16	14	13	16
Agree	12	9	9	14	14	11	10	10	12	13
Neutral	1	5	5	2	3	4	5	4	3	3
Disagree	0	1	3	0	0	0	0	2	2	0
Strongly Disagree	0	1	1	0	1	0	1	2	2	0

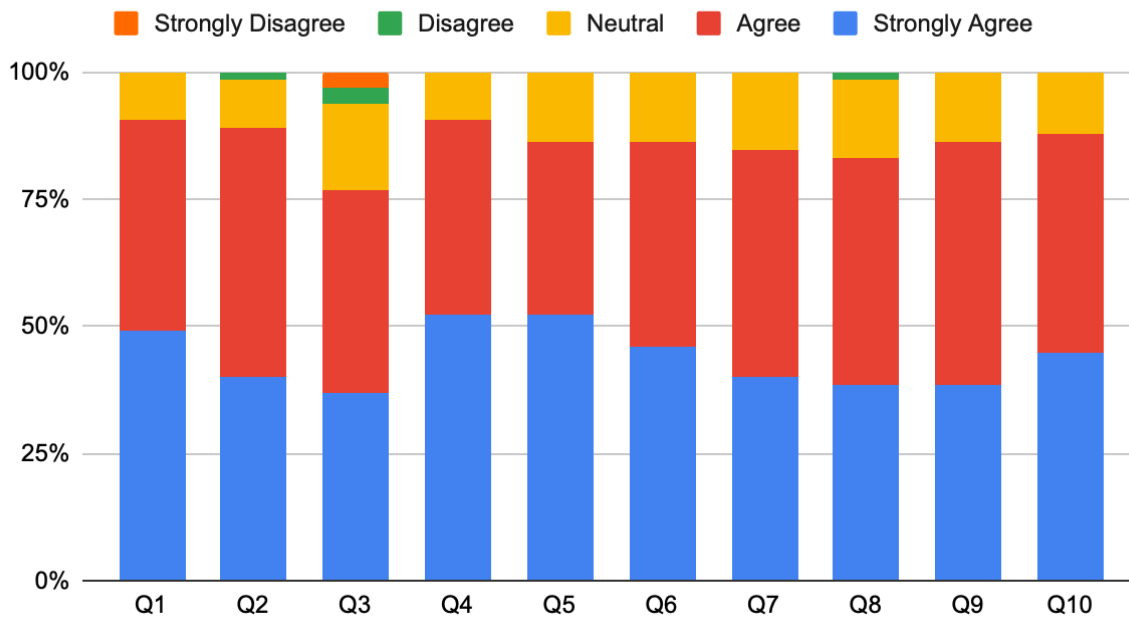
ECE





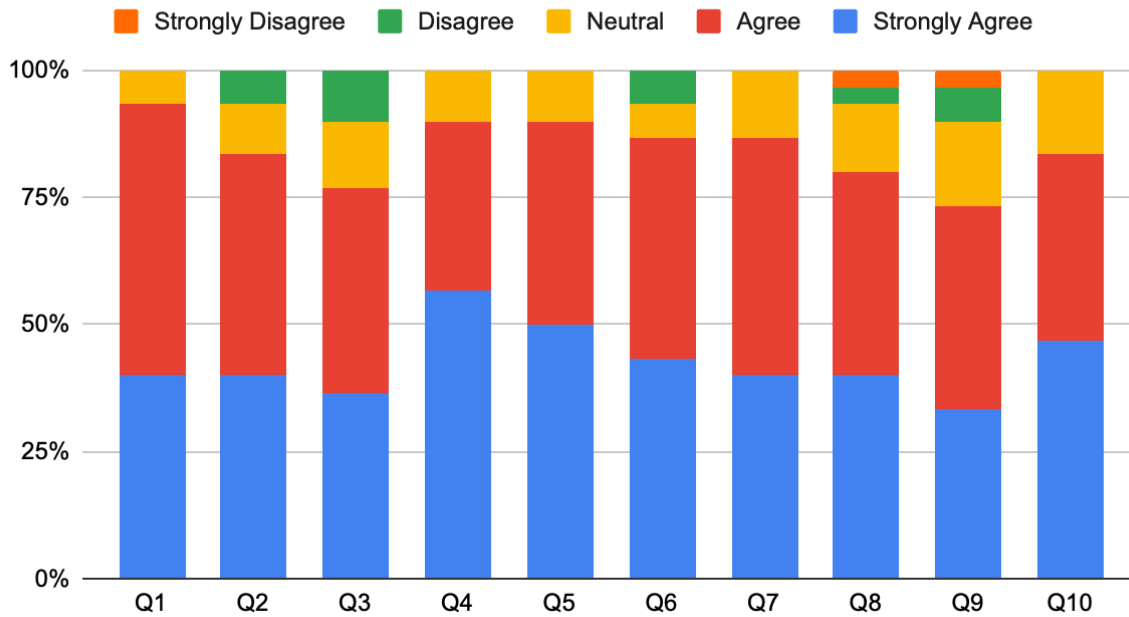
	YOP	2024	Branch	EEE						
	Q1	Q2	Q3	Q4	Q5	Q6	Q7	Q8	Q9	Q10
Strongly Agree	32	26	24	34	34	30	26	25	25	29
Agree	27	32	26	25	22	26	29	29	31	28
Neutral	6	6	11	6	9	9	10	10	9	8
Disagree	0	1	2	0	0	0	0	1	0	0
Strongly Disagree	0	0	2	0	0	0	0	0	0	0

EEE



	YOP	2023	Branch	EIE						
	Q1	Q2	Q3	Q4	Q5	Q6	Q7	Q8	Q9	Q10
Strongly Agree	12	12	11	17	15	13	12	12	10	14
Agree	16	13	12	10	12	13	14	12	12	11
Neutral	2	3	4	3	3	2	4	4	5	5
Disagree	0	2	3	0	0	2	0	1	2	0
Strongly Disagree	0	0	0	0	0	0	0	1	1	0

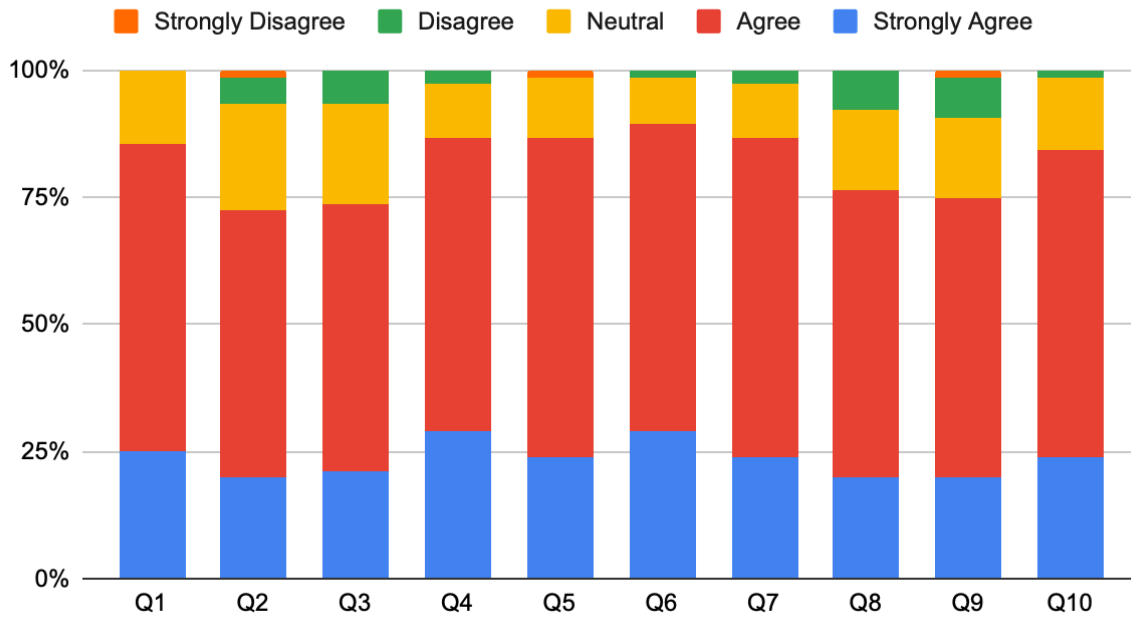
EIE





	YOP	2023	Branch	CE						
	Q1	Q2	Q3	Q4	Q5	Q6	Q7	Q8	Q9	Q10
Strongly Agree	19	15	16	22	18	22	18	15	15	18
Agree	46	40	40	44	48	46	48	43	42	46
Neutral	11	16	15	8	9	7	8	12	12	11
Disagree	0	4	5	2	0	1	2	6	6	1
Strongly Disagree	0	1	0	0	1	0	0	0	1	0

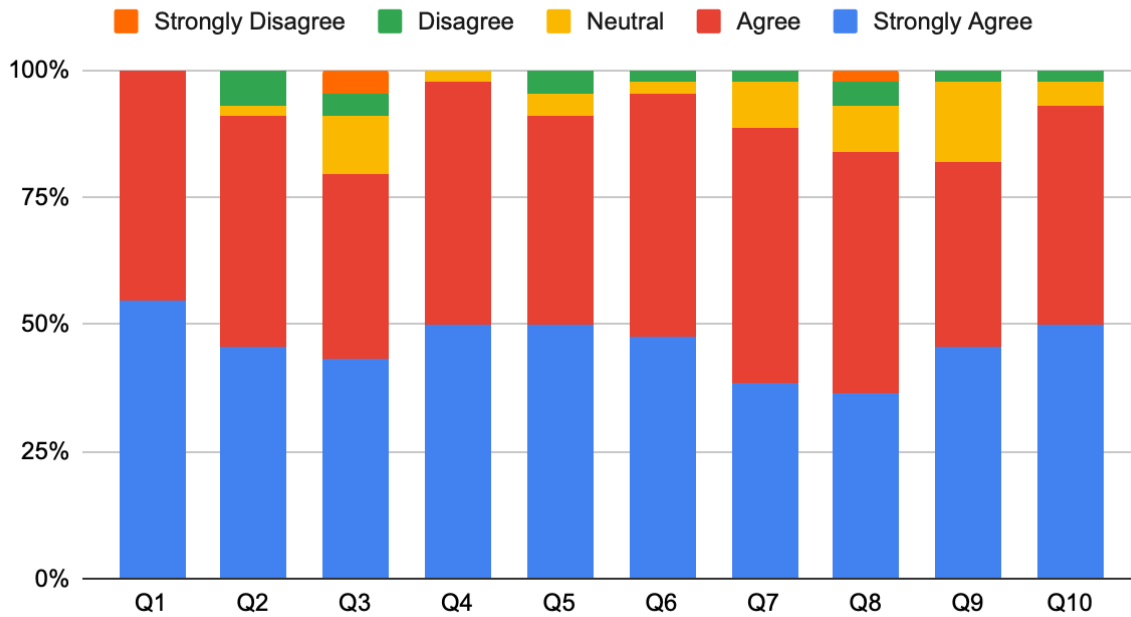
CE





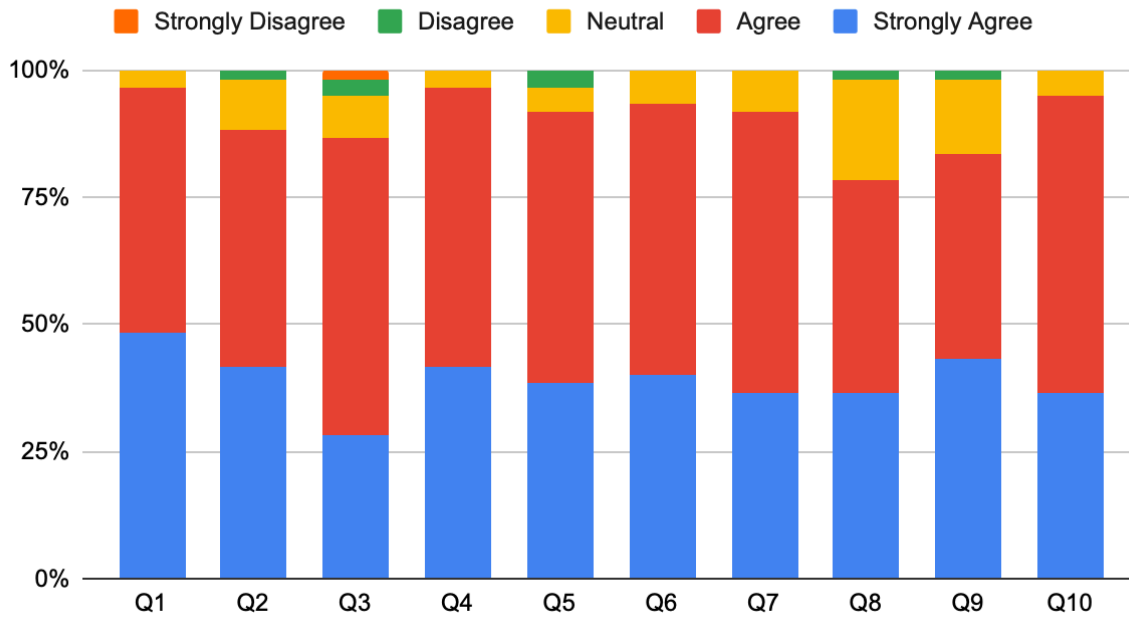
	YOP	2023	Branch	ME						
	Q1	Q2	Q3	Q4	Q5	Q6	Q7	Q8	Q9	Q10
Strongly Agree	24	20	19	22	22	21	17	16	20	22
Agree	20	20	16	21	18	21	22	21	16	19
Neutral	0	1	5	1	2	1	4	4	7	2
Disagree	0	3	2	0	2	1	1	2	1	1
Strongly Disagree	0	0	2	0	0	0	0	1	0	0

ME



	YOP	2023	Branch	MCA						
	Q1	Q2	Q3	Q4	Q5	Q6	Q7	Q8	Q9	Q10
Strongly Agree	29	25	17	25	23	24	22	22	26	22
Agree	29	28	35	33	32	32	33	25	24	35
Neutral	2	6	5	2	3	4	5	12	9	3
Disagree	0	1	2	0	2	0	0	1	1	0
Strongly Disagree	0	0	1	0	0	0	0	0	0	0

MCA



	YOP	2023	Branch	MBA						
	Q1	Q2	Q3	Q4	Q5	Q6	Q7	Q8	Q9	Q10
Strongly Agree	3	2	0	2	3	0	2	2	2	1
Agree	11	11	9	12	9	10	14	10	12	14
Neutral	4	4	6	4	4	8	1	4	4	3
Disagree	0	1	3	0	2	0	1	2	0	0
Strongly Disagree	0	0	0	0	0	0	0	0	0	0

MBA

